

Tucson Colored Gemstone Update

Presented by Kusam Malhotra, G.G. (GIA)

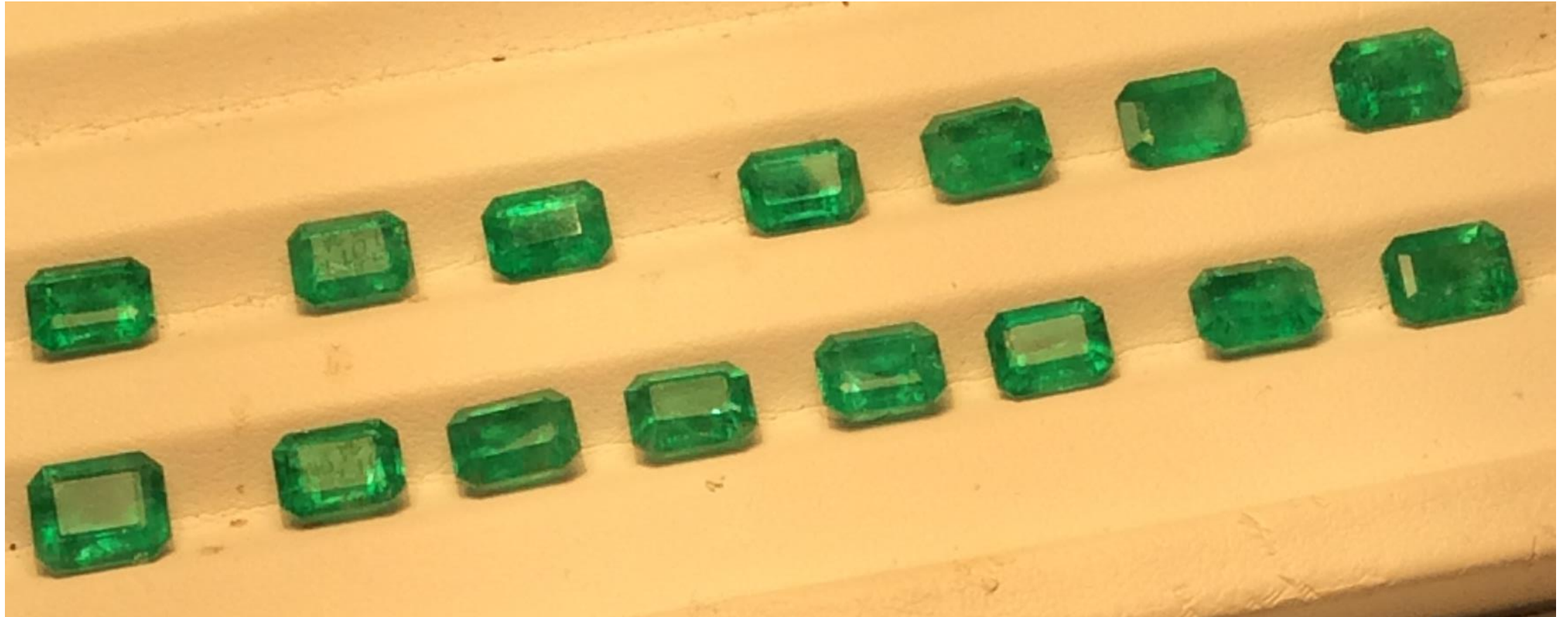


Helen Serras-Herman & Kusam Malhotra

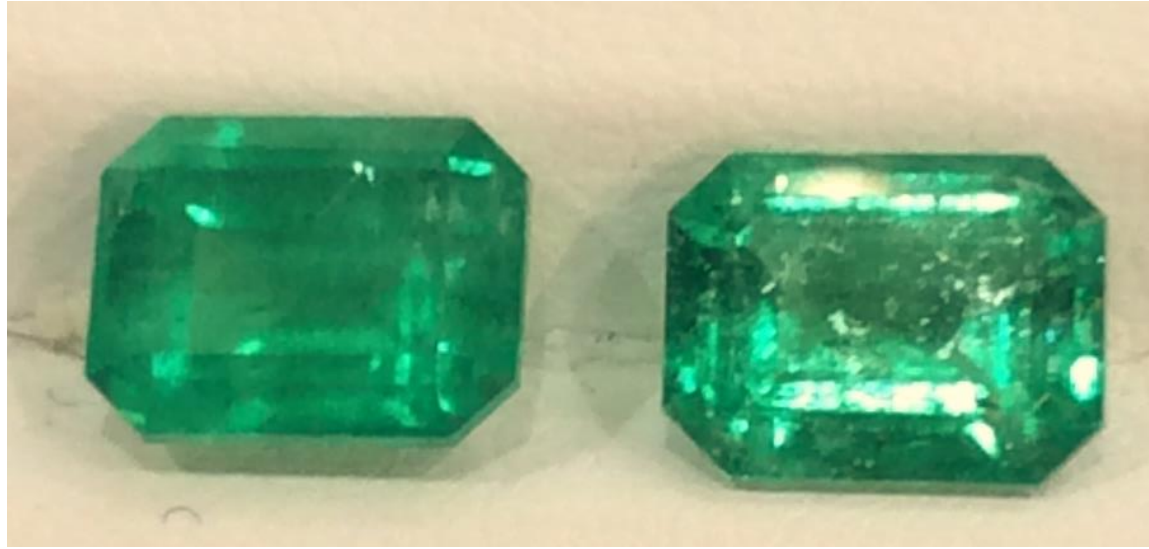
Emeralds from Shakiso - NEW Ethiopian Mine

Wholesale prices:

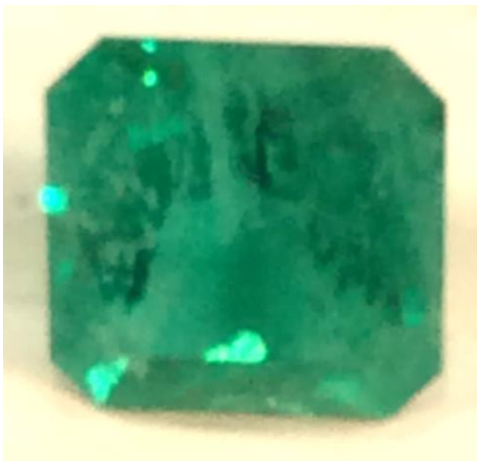
2-4 cts \$550-\$800 per carat, >4 cts \$850-\$1200/ct, 15-30 cts \$1800K-\$3K/ct



Emeralds from Shakiso - NEW Ethiopian Mine

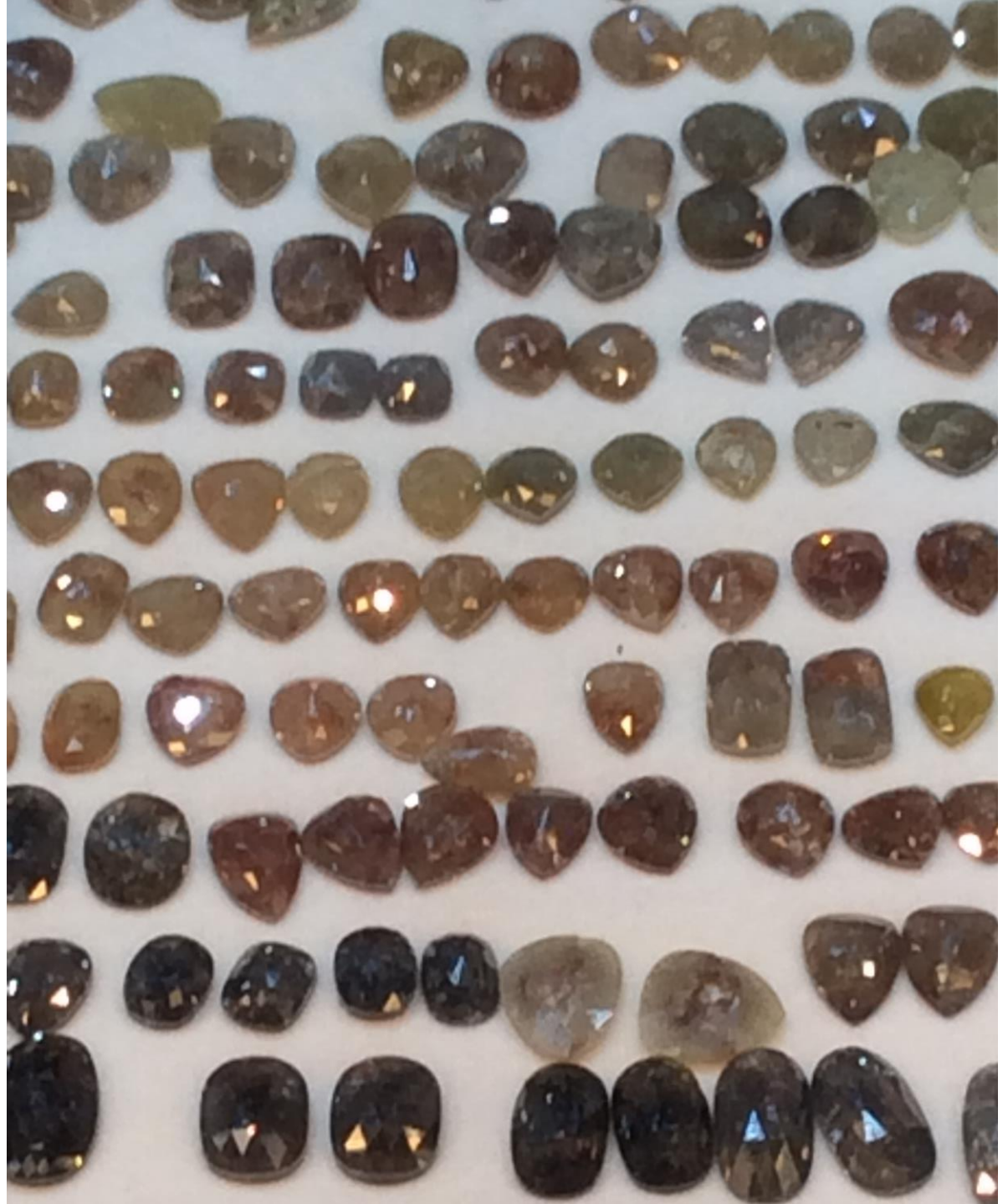


Inclusions noticeable by eye, nice bright color, expect the price to go up from here!



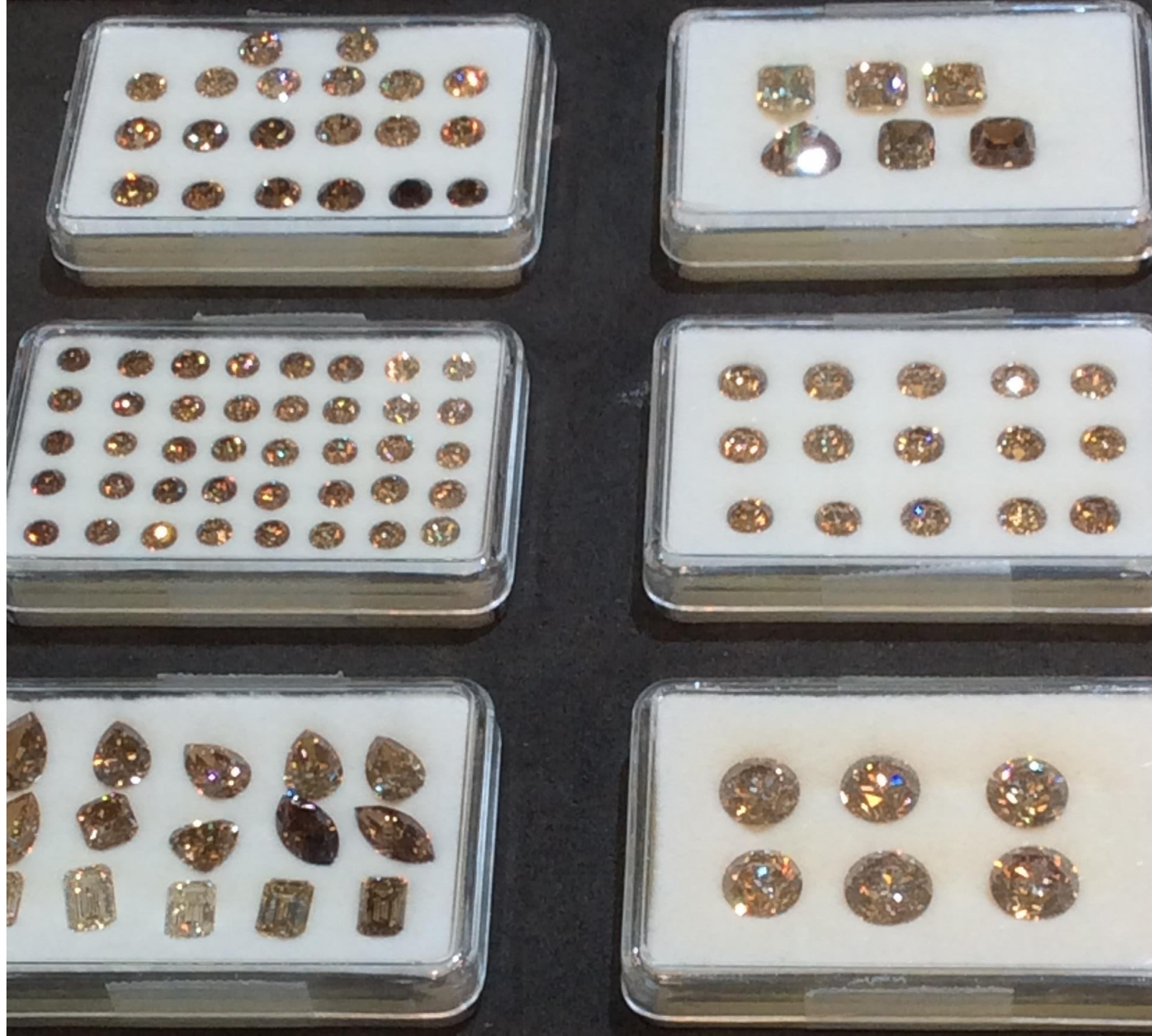
Natural Uncut Diamonds from Australia

Rough 1-3cts \$150 - \$400 per carat
Matching Pairs

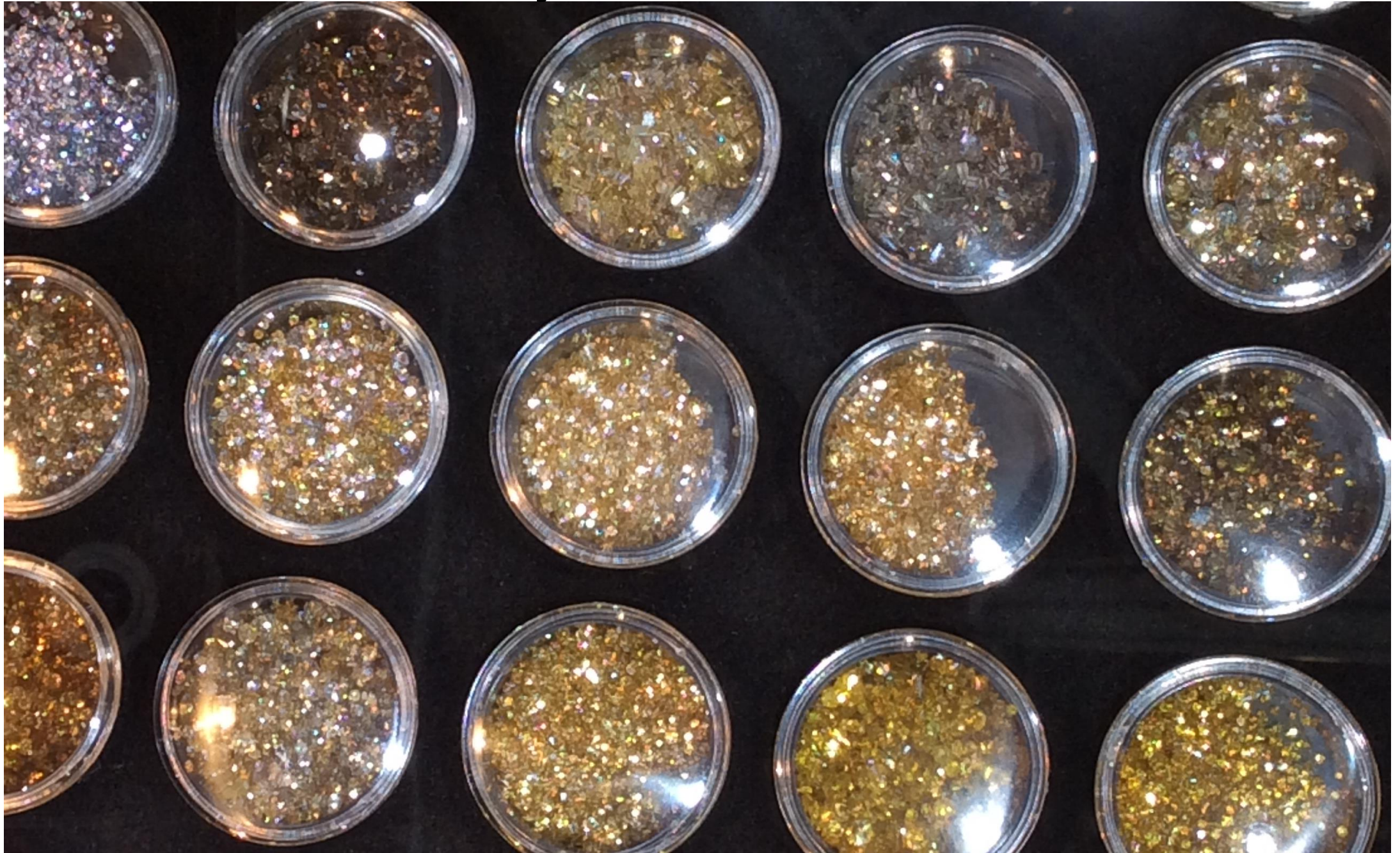


Natural Champaign Diamonds

\$600 - \$ 1500 per carat



Natural Fancy Color Diamond Melee



Natural Pink Golden Yellow Diamond Melee





Natural Color Diamond Melee

Designers love the color and matching sets for unique designs.

Total melee was 2ct to 10ct mixed lots
Pink \$1500 - \$2K per carat
Intense Pink \$2K - \$3K per carat

Natural Fancy Color Diamonds

Assorted Cut
and Shapes

0.25ct – 2.0ct \$3K - \$5K per carat



Assorted Cut and Shapes

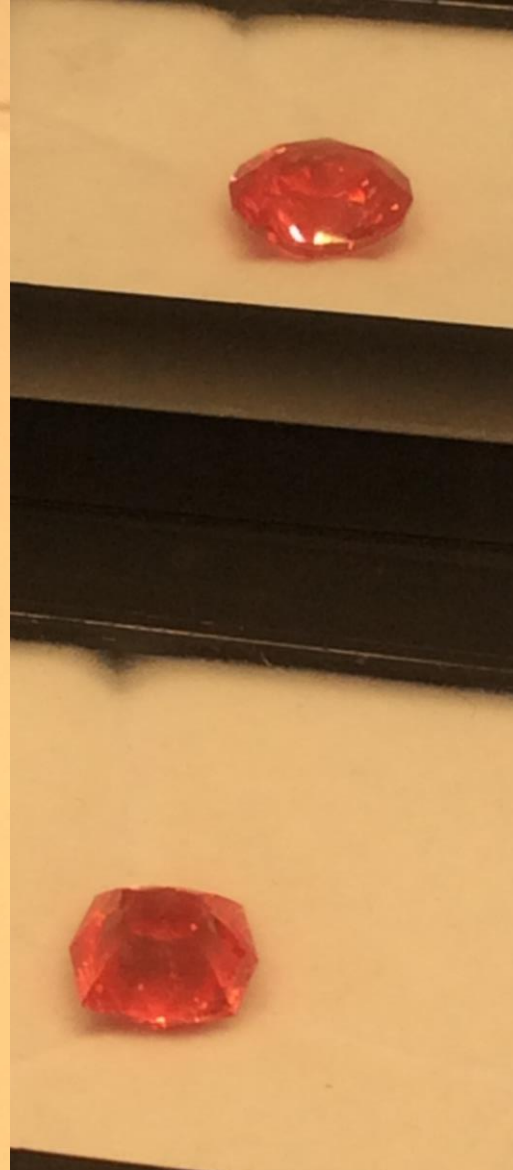
The image displays a large collection of small, square, gold-colored jewelry items, likely earrings, arranged in a grid. Each item is mounted on a white card with a black border, which also contains printed text detailing the item's specifications, including color, clarity, and weight. The items are displayed in a black tray, and the background shows other similar trays.

The items are arranged in a grid, with each item labeled with a unique identifier (e.g., A2611, A2612, A2613, etc.) and its corresponding specifications. The specifications typically include color (e.g., F, G, H, I, J, K, L, M, N, O, P, Q, R, S, T, U, V, W, X, Y, Z), clarity (e.g., VS1, VS2, SI1, SI2, I1, I2, I3, I4, I5, I6, I7, I8, I9, I10, I11, I12, I13, I14, I15, I16, I17, I18, I19, I20, I21, I22, I23, I24, I25, I26, I27, I28, I29, I30, I31, I32, I33, I34, I35, I36, I37, I38, I39, I40, I41, I42, I43, I44, I45, I46, I47, I48, I49, I50, I51, I52, I53, I54, I55, I56, I57, I58, I59, I60, I61, I62, I63, I64, I65, I66, I67, I68, I69, I70, I71, I72, I73, I74, I75, I76, I77, I78, I79, I80, I81, I82, I83, I84, I85, I86, I87, I88, I89, I90, I91, I92, I93, I94, I95, I96, I97, I98, I99, I100), and weight (e.g., 0.01, 0.02, 0.03, 0.04, 0.05, 0.06, 0.07, 0.08, 0.09, 0.10, 0.11, 0.12, 0.13, 0.14, 0.15, 0.16, 0.17, 0.18, 0.19, 0.20, 0.21, 0.22, 0.23, 0.24, 0.25, 0.26, 0.27, 0.28, 0.29, 0.30, 0.31, 0.32, 0.33, 0.34, 0.35, 0.36, 0.37, 0.38, 0.39, 0.40, 0.41, 0.42, 0.43, 0.44, 0.45, 0.46, 0.47, 0.48, 0.49, 0.50, 0.51, 0.52, 0.53, 0.54, 0.55, 0.56, 0.57, 0.58, 0.59, 0.60, 0.61, 0.62, 0.63, 0.64, 0.65, 0.66, 0.67, 0.68, 0.69, 0.70, 0.71, 0.72, 0.73, 0.74, 0.75, 0.76, 0.77, 0.78, 0.79, 0.80, 0.81, 0.82, 0.83, 0.84, 0.85, 0.86, 0.87, 0.88, 0.89, 0.90, 0.91, 0.92, 0.93, 0.94, 0.95, 0.96, 0.97, 0.98, 0.99, 1.00, 1.01, 1.02, 1.03, 1.04, 1.05, 1.06, 1.07, 1.08, 1.09, 1.10, 1.11, 1.12, 1.13, 1.14, 1.15, 1.16, 1.17, 1.18, 1.19, 1.20, 1.21, 1.22, 1.23, 1.24, 1.25, 1.26, 1.27, 1.28, 1.29, 1.30, 1.31, 1.32, 1.33, 1.34, 1.35, 1.36, 1.37, 1.38, 1.39, 1.40, 1.41, 1.42, 1.43, 1.44, 1.45, 1.46, 1.47, 1.48, 1.49, 1.50, 1.51, 1.52, 1.53, 1.54, 1.55, 1.56, 1.57, 1.58, 1.59, 1.60, 1.61, 1.62, 1.63, 1.64, 1.65, 1.66, 1.67, 1.68, 1.69, 1.70, 1.71, 1.72, 1.73, 1.74, 1.75, 1.76, 1.77, 1.78, 1.79, 1.80, 1.81, 1.82, 1.83, 1.84, 1.85, 1.86, 1.87, 1.88, 1.89, 1.90, 1.91, 1.92, 1.93, 1.94, 1.95, 1.96, 1.97, 1.98, 1.99, 2.00, 2.01, 2.02, 2.03, 2.04, 2.05, 2.06, 2.07, 2.08, 2.09, 2.10, 2.11, 2.12, 2.13, 2.14, 2.15, 2.16, 2.17, 2.18, 2.19, 2.20, 2.21, 2.22, 2.23, 2.24, 2.25, 2.26, 2.27, 2.28, 2.29, 2.30, 2.31, 2.32, 2.33, 2.34, 2.35, 2.36, 2.37, 2.38, 2.39, 2.40, 2.41, 2.42, 2.43, 2.44, 2.45, 2.46, 2.47, 2.48, 2.49, 2.50, 2.51, 2.52, 2.53, 2.54, 2.55, 2.56, 2.57, 2.58, 2.59, 2.60, 2.61, 2.62, 2.63, 2.64, 2.65, 2.66, 2.67, 2.68, 2.69, 2.70, 2.71, 2.72, 2.73, 2.74, 2.75, 2.76, 2.77, 2.78, 2.79, 2.80, 2.81, 2.82, 2.83, 2.84, 2.85, 2.86, 2.87, 2.88, 2.89, 2.90, 2.91, 2.92, 2.93, 2.94, 2.95, 2.96, 2.97, 2.98, 2.99, 3.00, 3.01, 3.02, 3.03, 3.04, 3.05, 3.06, 3.07, 3.08, 3.09, 3.10, 3.11, 3.12, 3.13, 3.14, 3.15, 3.16, 3.17, 3.18, 3.19, 3.20, 3.21, 3.22, 3.23, 3.24, 3.25, 3.26, 3.27, 3.28, 3.29, 3.30, 3.31, 3.32, 3.33, 3.34, 3.35, 3.36, 3.37, 3.38, 3.39, 3.40, 3.41, 3.42, 3.43, 3.44, 3.45, 3.46, 3.47, 3.48, 3.49, 3.50, 3.51, 3.52, 3.53, 3.54, 3.55, 3.56, 3.57, 3.58, 3.59, 3.60, 3.61, 3.62, 3.63, 3.64, 3.65, 3.66, 3.67, 3.68, 3.69, 3.70, 3.71, 3.72, 3.73, 3.74, 3.75, 3.76, 3.77, 3.78, 3.79, 3.80, 3.81, 3.82, 3.83, 3.84, 3.85, 3.86, 3.87, 3.88, 3.89, 3.90, 3.91, 3.92, 3.93, 3.94, 3.95, 3.96, 3.97, 3.98, 3.99, 4.00, 4.01, 4.02, 4.03, 4.04, 4.05, 4.06, 4.07, 4.08, 4.09, 4.10, 4.11, 4.12, 4.13, 4.14, 4.15, 4.16, 4.17, 4.18, 4.19, 4.20, 4.21, 4.22, 4.23, 4.24, 4.25, 4.26, 4.27, 4.28, 4.29, 4.30, 4.31, 4.32, 4.33, 4.34, 4.35, 4.36, 4.37, 4.38, 4.39, 4.40, 4.41, 4.42, 4.43, 4.44, 4.45, 4.46, 4.47, 4.48, 4.49, 4.50, 4.51, 4.52, 4.53, 4.54, 4.55, 4.56, 4.57, 4.58, 4.59, 4.60, 4.61, 4.62, 4.63, 4.64, 4.65, 4.66, 4.67, 4.68, 4.69, 4.70, 4.71, 4.72, 4.73, 4.74, 4.75, 4.76, 4.77, 4.78, 4.79, 4.80, 4.81, 4.82, 4.83, 4.84, 4.85, 4.86, 4.87, 4.88, 4.89, 4.90, 4.91, 4.92, 4.93, 4.94, 4.95, 4.96, 4.97, 4.98, 4.99, 5.00, 5.01, 5.02, 5.03, 5.04, 5.05, 5.06, 5.07, 5.08, 5.09, 5.10, 5.11, 5.12, 5.13, 5.14, 5.15, 5.16, 5.17, 5.18, 5.19, 5.20, 5.21, 5.22, 5.23, 5.24, 5.25, 5.26, 5.27, 5.28, 5.29, 5.30, 5.31, 5.32, 5.33, 5.34, 5.35, 5.36, 5.37, 5.38, 5.39, 5.40, 5.41, 5.42, 5.43, 5.44, 5.45, 5.46, 5.47, 5.48, 5.49, 5.50, 5.51, 5.52, 5.53, 5.54, 5.55, 5.56, 5.57, 5.58, 5.59, 5.60, 5.61, 5.62, 5.63, 5.64, 5.65, 5.66, 5.67, 5.68, 5.69, 5.70, 5.71, 5.72



Rhodochrosite Jewelry

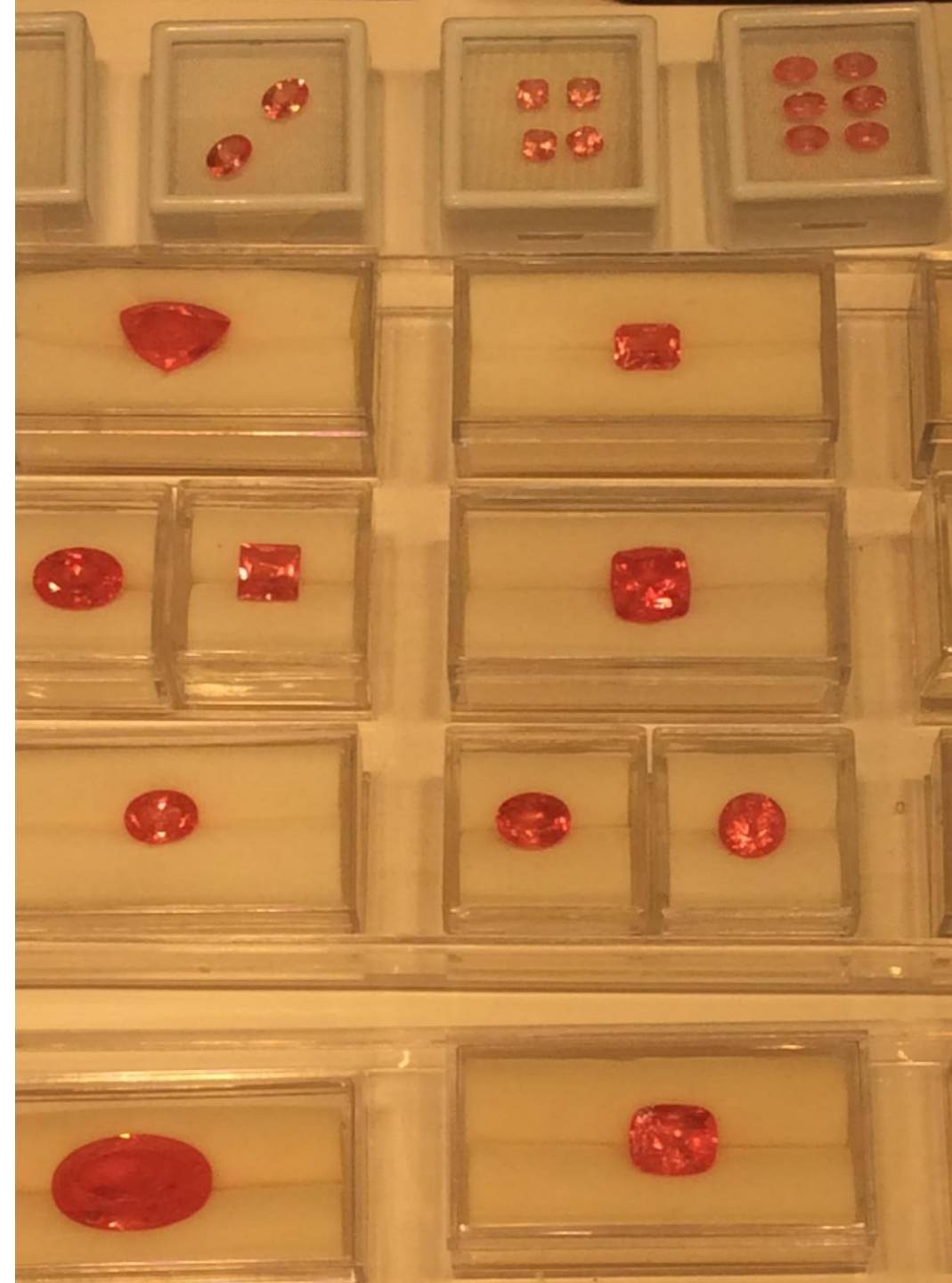
Finest Rhodochrosite from Climax Mine



This 20ct gem was offered at
\$30K

Old stock as these Colorado
mines are no longer in
production.

Extra Fine Rhodochrosite



Flat Cab Tourmalines from Madagascar



Interesting Color combinations, \$15 - \$25 per carat



**Poor Quality
Rubellite
Tourmalines
from
Madagascar**

\$75 - \$150 per carat



Poor Quality Rubellite Tourmalines from Madagascar

\$125 - \$200 per carat



Carved Opal from Peru

\$10 per carat

Carved Opal from Peru





**Black Sapphire ???
From Madagascar**

\$25 - \$50 per carat

**Natural Purple Unheated Sapphire
Extra Fine Gemstone 4.22 cts \$4.5K
From Madagascar**



**Extra Fine Oval
Mint Green Tourmaline
37 cts from Madagascar**



**Natural Orange Sapphire
from Madagascar**

Unheated Natural Purple Sapphire From Madagascar



There was very little garnet displayed at the show, but lots of sapphire.

Natural Pink Sapphire



Natural Pink Sapphire
Cushion Cut 3.38 cts
\$4500 - \$5K per carat



Natural Pink Sapphire
Extra fine oval 3.68 cts



Natural Unheated Pink Sapphire Extra Fine 4.39 cts Cushion Cut



Heated Pink Sapphire \$5K - \$6K per carat
UnHeated Pink Sapphire was as much as \$9K per carat

Natural Unheated Blue Sapphire

Oval 3.02 cts



UnHeated Blue Sapphire \$4.5K – \$5K per Carat
Heated Blue Sapphire \$3K – \$4K per Carat

Natural Unheated Blue Sapphire
Fine Blue Oval 3.14 cts



**Natural Heated Blue Sapphire
Extra Fine Cushion Cut 5.32 cts**

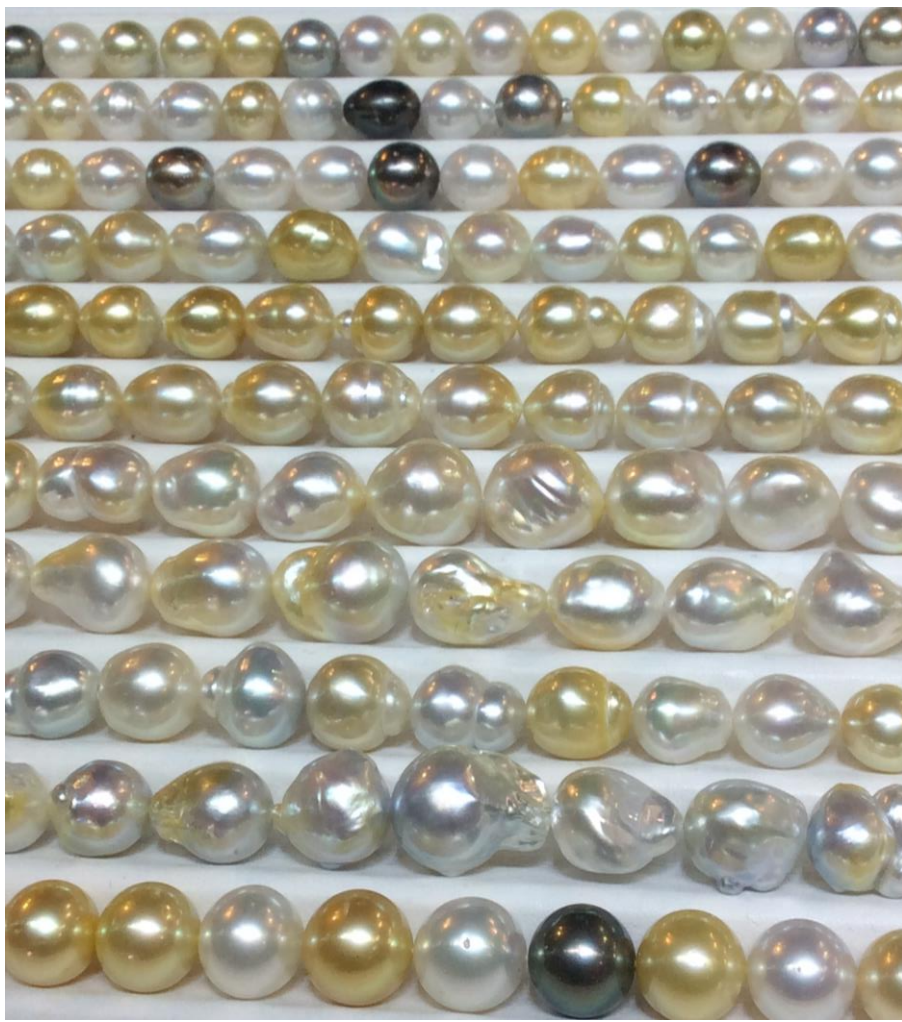


**Natural Unheated Fine Ruby
Oval 2.53 cts
from Mozambique**



Heated Thai Ruby
Very Fine Oval 1.71 cts





Natural South Sea Pearls

\$5K - \$7.5K per Strand

Tanzanites



Found in 1972 natural out of mine color is beige or brown, heated to get blue color.
Poor cut and too much purple \$450 - \$550 per carat

Creative
Amethyst &
Diamond
\$3850



Rutilated
Quartz
& Diamonds
\$3500



Fancy Cut
Rulite Quartz
& Diamonds
\$2800



Emerald &
Diamond
Earrings
\$4K-6K



Mineral specimens are
big business fetching
\$15K or more each.

Crocoite from Australia

2018 Theme
was Crystals &
Crystal Forms



Tourmaline Crystal from Brazil



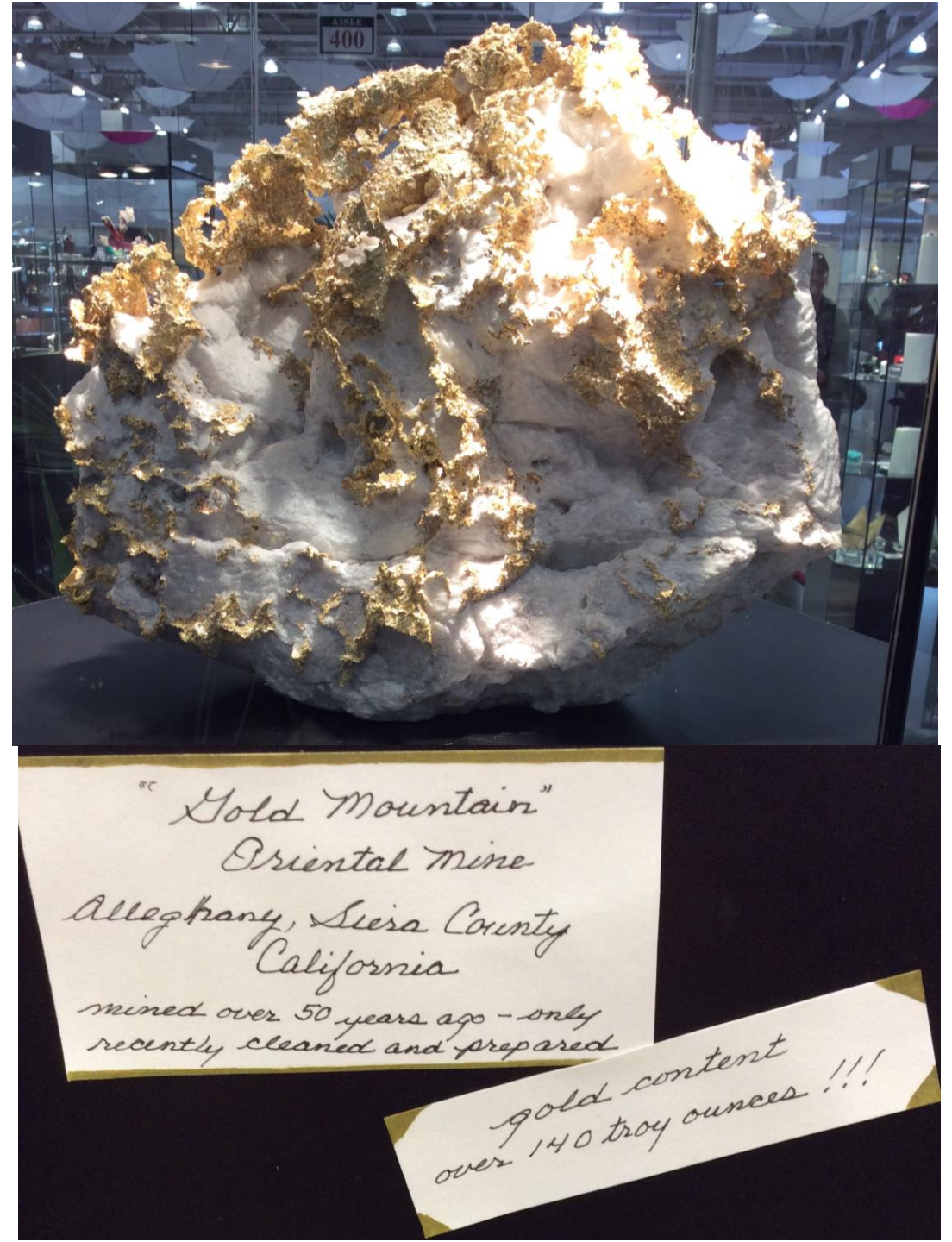
Tourmaline Twin Crystal



Emerald Crystal



Gold Mountain



Rare Minerals



Rare Minerals

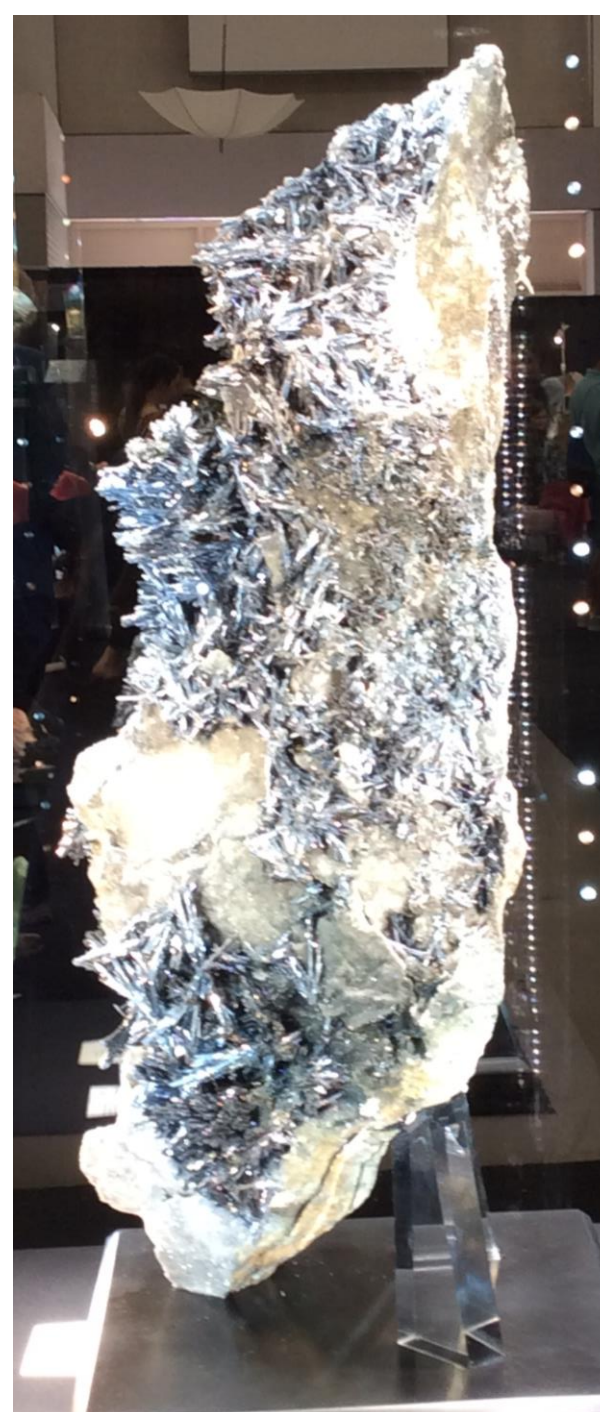


Amethyst & Quartz



Stibnite

STIBNITE
Xikuangshan Antimony Mine
Shaoyang Co., Hunan Prov., China



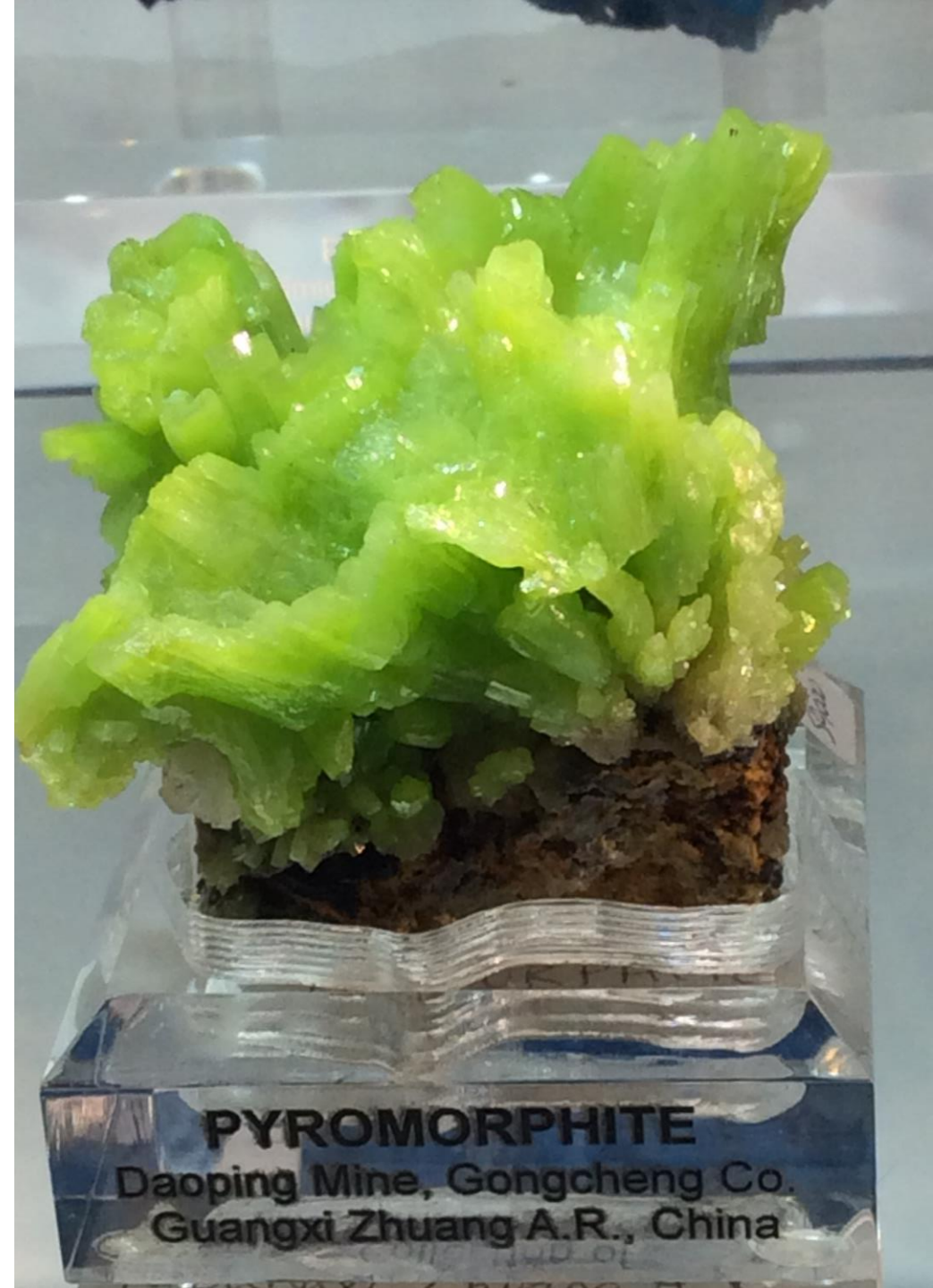
Fluorite Quartz Orthoclase

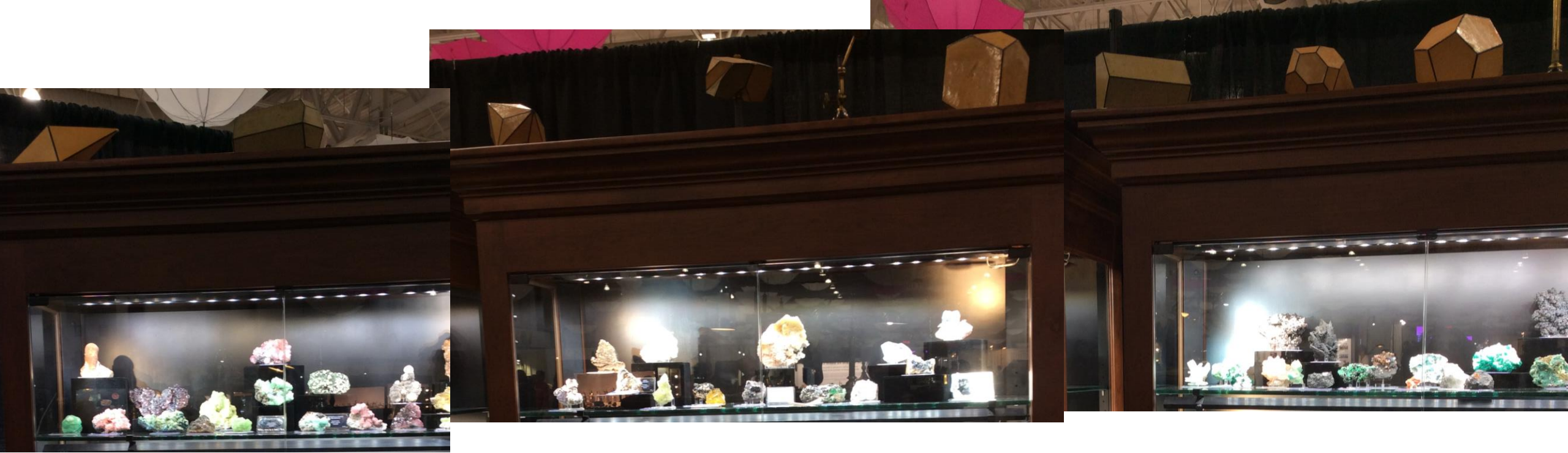


Azurite & Malachite



Pyromorphite From China





Look above the cases of mineral crystal specimens and you will find 19th Century wooden representations of the crystal form of each crystal displayed in each case.

19th Century's Collection





